

**Reinvent Any
Space with
Flexible, Smart
Building Solutions.**



Smarter
technology
for all

Lenovo

Introduction

Facing the Changing Structure of Workspaces Head-On.

Chapter 1

Reimagining the Physical Workspace in a Post-COVID World.

Chapter 2

The Smart Building Ecosystem for Corporate Offices.

Chapter 3

The Smart Building Ecosystem for Healthcare Facilities.

Chapter 4

The Smart Building Ecosystem for Higher Education.

Chapter 5

Enabling an End-To-End Smart Workspace Model.

Conclusion

Prioritizing Purpose in the Workplace.

Hybrid work has inspired a shift in the way physical workspaces are structured and used.

Creating a flexible smart building ecosystem makes the best use of your spaces, reduces costs, maximizes real estate portfolios, and helps employees be fully engaged and productive on-site.

Chapter 1

Reimagining the Physical Workspace in a Post-COVID World.

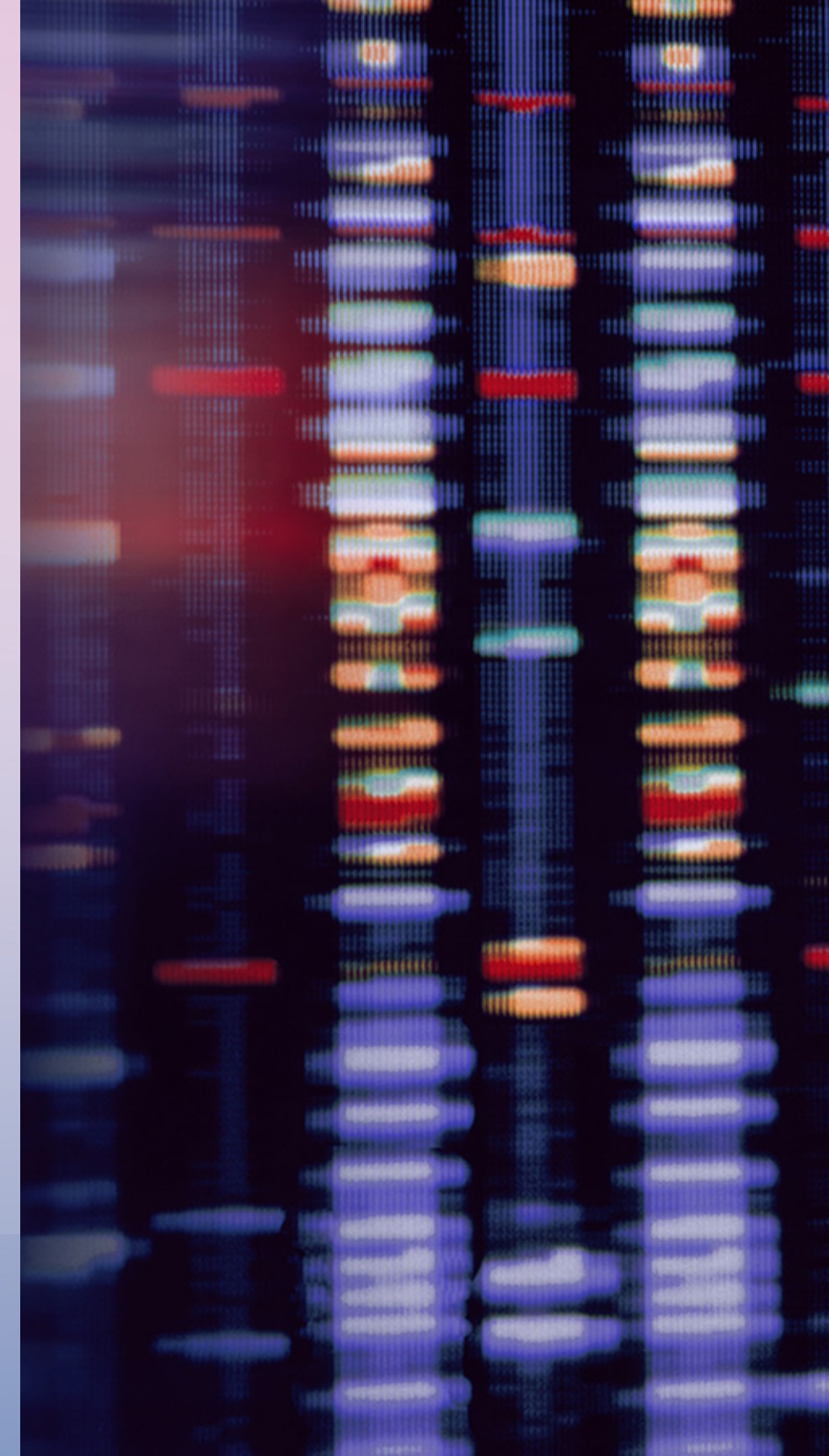
Lenovo

**53% of employees
anticipate their employers
will offer a hybrid work
arrangement beyond 2022.¹**

Smart building solutions let facility managers envision and create a workplace ecosystem that makes it easy for individual employees to perform their day-to-day tasks when they're on-site.

Yet, facility managers face several challenges when trying to select and implement such tools for their building's unique industry and needs, including:

- Knowing what data to monitor for visibility into how facilities are being used.
- Working with slow, disparate systems.
- Using legacy solutions that don't integrate well with new tools.
- Experiencing a disconnect between teams who traditionally don't have much interaction.



“The most sought-after office space these days is very flexible, with lots of meeting space and places to gather, because in a hybrid world the most important thing you can do in an office isn’t on a keyboard, it’s simply to be present with other humans to build culture, learn and forge relationships.”

Alexander Snyder

Portfolio Manager at CenterSquare Investment Management



Chapter 2

The Smart Building Ecosystem for Corporate Offices.

**Less than 10% of
office space looks the
same as it did pre-COVID.²**

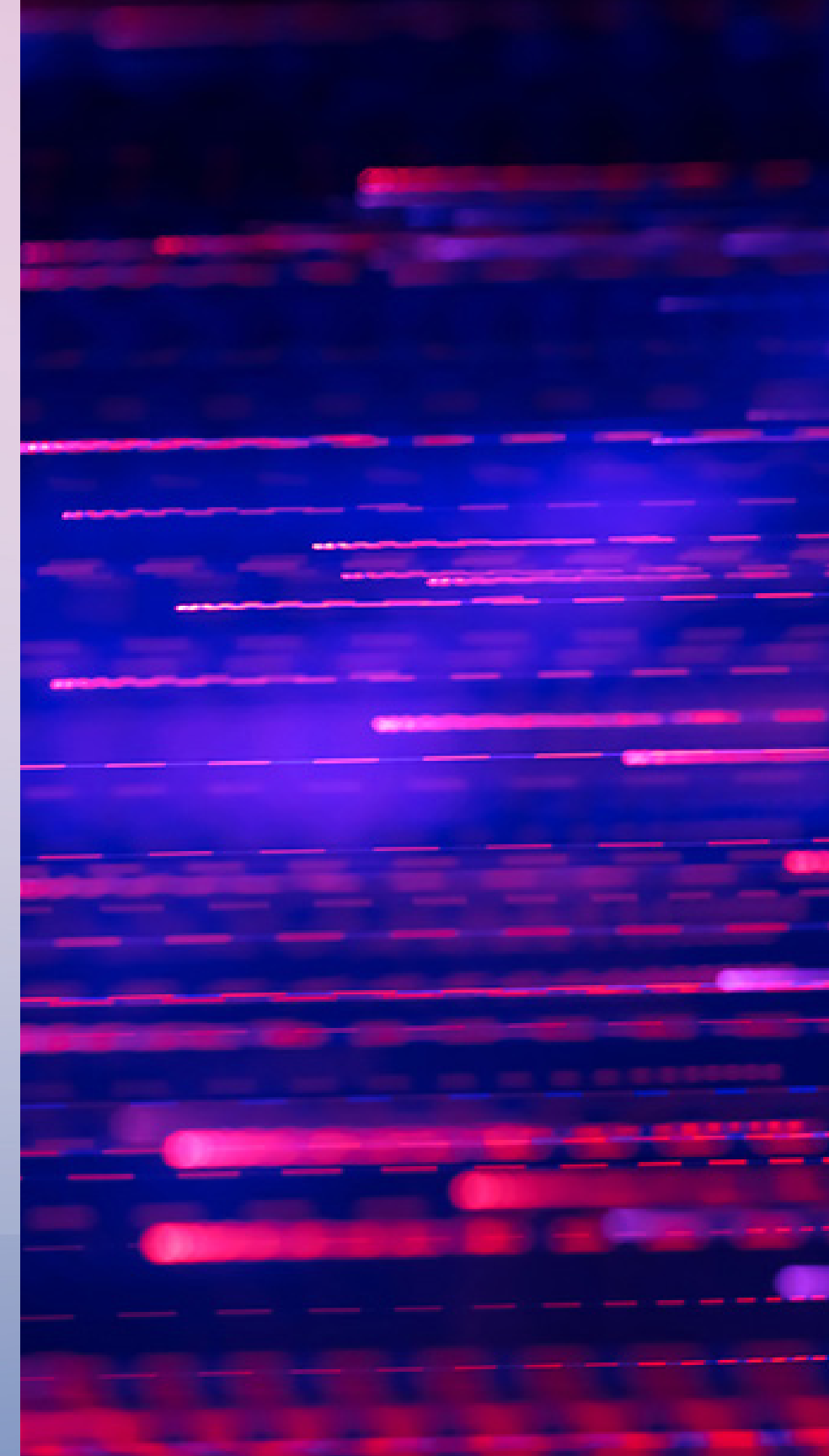
Trying to juggle too many solutions causes frustration, creates information silos, and drags down productivity.

To maximize the building's square and create a positive end-user experience, a truly effective hybrid office space typically focuses on smart building solutions, such as:

- **Scheduling and booking.** Find and reserve available workspaces independently or with co-workers in real time from a mobile app, work calendar, or internet browser.
- **Visitor management.** Register visitors before they arrive and provide them with the information they need to know exactly where to go for their appointment.
- **Workplace analytics.** Collect occupancy data on a granular level to see exactly how your office spaces are being used so you can more accurately predict future requirements.

Ditching “business as usual” for something better?

Find out how Lenovo can help >



“For most organizations, reverting to the status quo won’t be an option. People will expect more flexibility, better technology, and incentives to come to the office, and companies must heed the call.”

Harvard Business Review, 2022³



Chapter 3

The Smart Building Ecosystem for Healthcare Facilities.

Emergency room crowding contributes to clinical burnout and poor patient experience, and it's only getting worse.

As of August 2021, Emergency Department volumes have increased from pre-COVID levels, partly due to pent-up demand for healthcare that was delayed during the pandemic.⁴

Long wait times in healthcare facilities add to clinician stress and contribute to poor patient outcomes.

Facilities managers in these settings are employing the following solutions to identify how their buildings are used and how to allocate their spaces for a better patient and clinician experience:

- **Workspace analytics.** See how much and how often patients and staff use exam rooms, waiting rooms, and other spaces.
- **AI video security.** Employ sensors and cameras to monitor facilities and receive real-time notifications when occupancy levels reach their threshold.
- **Visitor management.** Let patients fill in health declaration forms before arrival and help them navigate your facilities.

“Forward thinking is needed in future building design to prepare patients and healthcare workers for health risks. Part of this is reimagining the way hospital spaces can be utilized to accommodate new challenges that may arise and maximize space to perform at top capacity.”

Forbes Real Estate⁵



Chapter 4

The Smart Building Ecosystem for Higher Education.

In a survey of higher education students, a quarter of respondents expressed a desire to see more security cameras on campus.⁶

Many campuses are looking to maximize their spaces so they can avoid costly renovations or expansions. At the same time, they're also dealing with increasing threats to safety.

Facilities managers of higher education buildings looking to build a cost-effective and safe workspace should focus on smart workplace solutions, such as:

- **Visitor management.** Set up visitor pre-registration and integrate door-lock control systems and turnstile gates to control who comes and goes, and send students and visitors notifications with location details.
- **AI video security.** Receive alerts when anomalies are detected by cameras and sensors to clamp down on irregular activities.
- **Workplace or space analytics.** Monitor occupancy in real time to see how students and staff use your space.
- **Digital signage.** Display relevant information, such as menu boards, emergency notices, and wayfinding details.

Learn more about how AI Video Security makes campuses safer and smarter >



The 2021 Campus Safety Access Control and Lockdown Survey shows that demand for visitor management is extremely high, with 83% of respondents reporting that they purchased visitor management systems within the past two years.⁷



Chapter 5

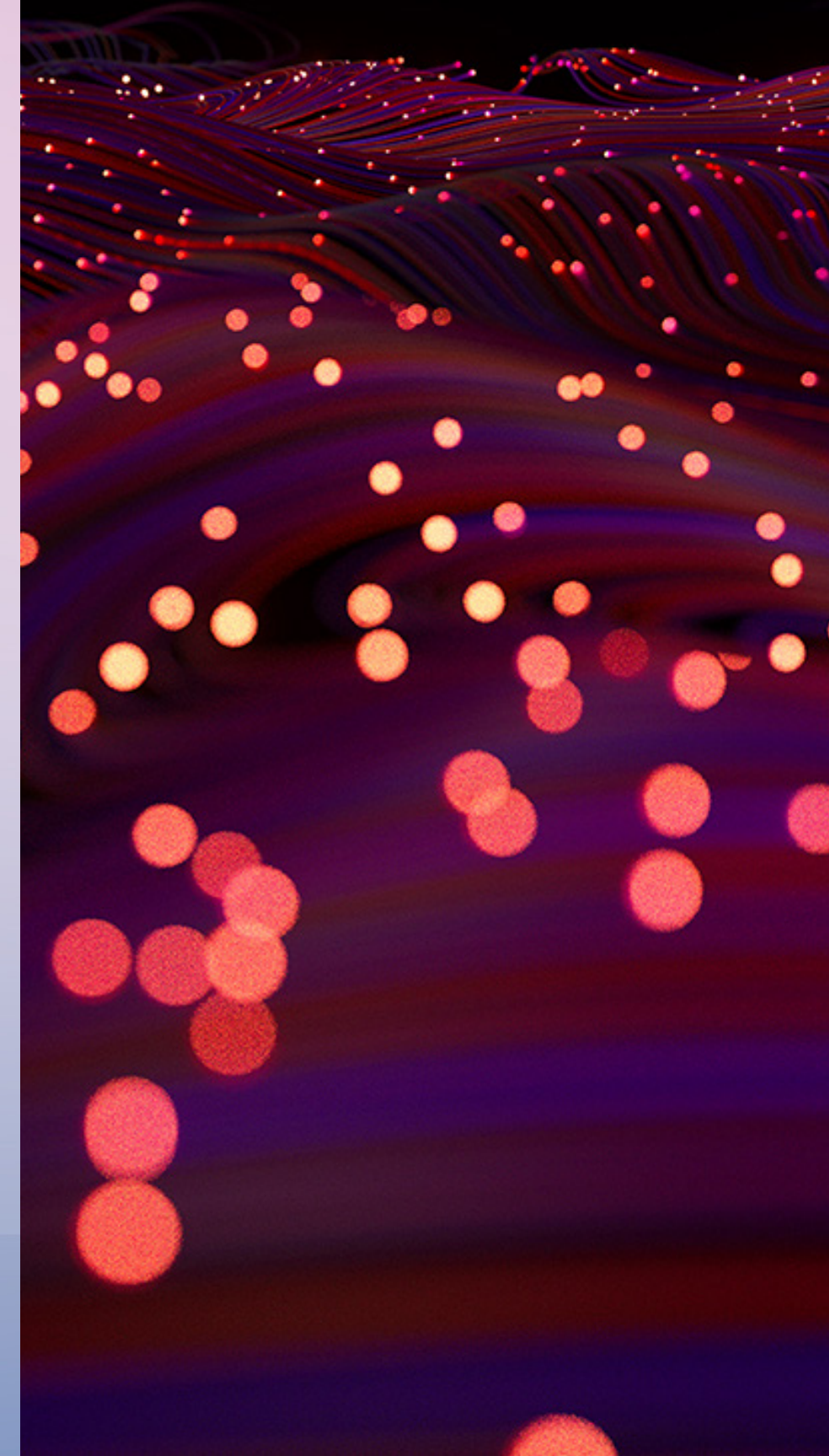
Enabling an End-To-End Smart Workspace Model.

A harmonious physical workspace for hybrid work arrangements is possible — and you don't need a team of IT wizards to make it a reality.

Our smart building tools offer best-in-class reliability, validated security, and easy deployment with minimal onboarding time. Plus, Lenovo offers global premier support to organizations that integrate their flexible hybrid workplace solutions:

- Digital signage.
- Workspace booking.
- Workplace analytics.
- AI video security.
- Visitor management.

For solutions requiring digital devices like screens and cameras, we also offer hardware mounting options, such as kiosks, stands, wall mounts, menu boards, and more.



Implementing Lenovo data collection solutions helped a major healthcare organization discover that overall, exam rooms were used less than 40% of the time, with many of them empty after 3:00 p.m. These findings helped them improve scheduling efficiency without increasing overhead costs.

Lenovo case study findings



Conclusion

Prioritizing Purpose in the Workplace.

Whether you're reimaging an office, healthcare facility, or educational campus, building a simple, purposeful, and cost-effective ecosystem requires that all your workplace solutions work seamlessly and in synchronicity. The system also needs to be agile enough to keep pace with rapidly emerging technologies and threats to security.

Book a demo to see how our solutions can help you create a space that employees will gladly return to >



“One of the biggest challenges with implementing a hybrid infrastructure is managing all the additional devices across buildings and campuses. More and more facility managers are welcoming opportunities to outsource the management of these devices to tech leaders like Lenovo so they can focus on their core responsibilities of supporting their organization.”

April Bertram

Director of Product Management at Lenovo

**Smarter
technology
for all**

Lenovo